

DO NOT SCALE

This drawing has been produced by DLT Engineering in accordance with the instructions of the client for their sole and specific use.

DLT Engineering shall not be liable for the use of any information contained on this drawing for any purpose other than that for which it was specifically prepared and provided.

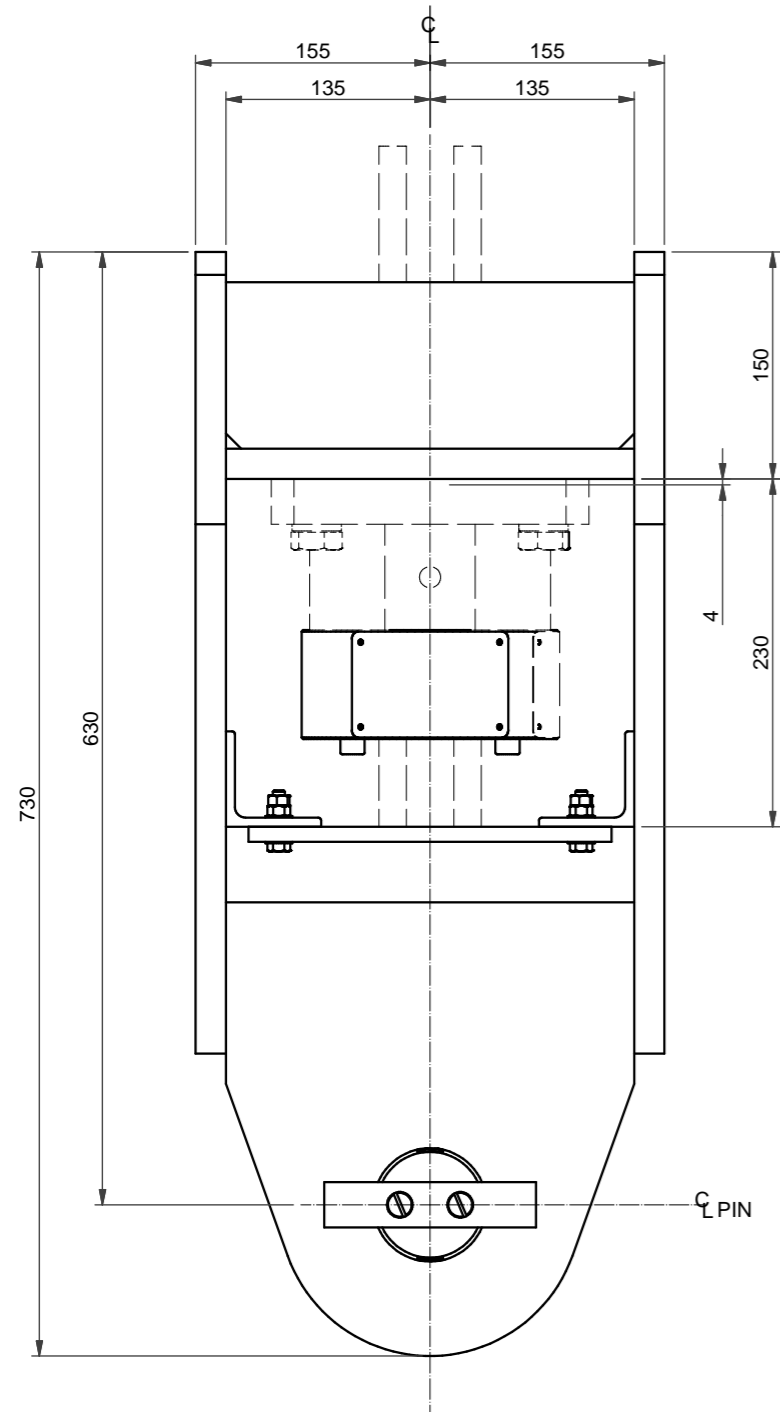
Should there be any doubt regarding the interpretation of any information given on this drawing, enquiries should be directed to DLT Engineering at the address given below before executing such part of the works.

Copyright © DLT Engineering

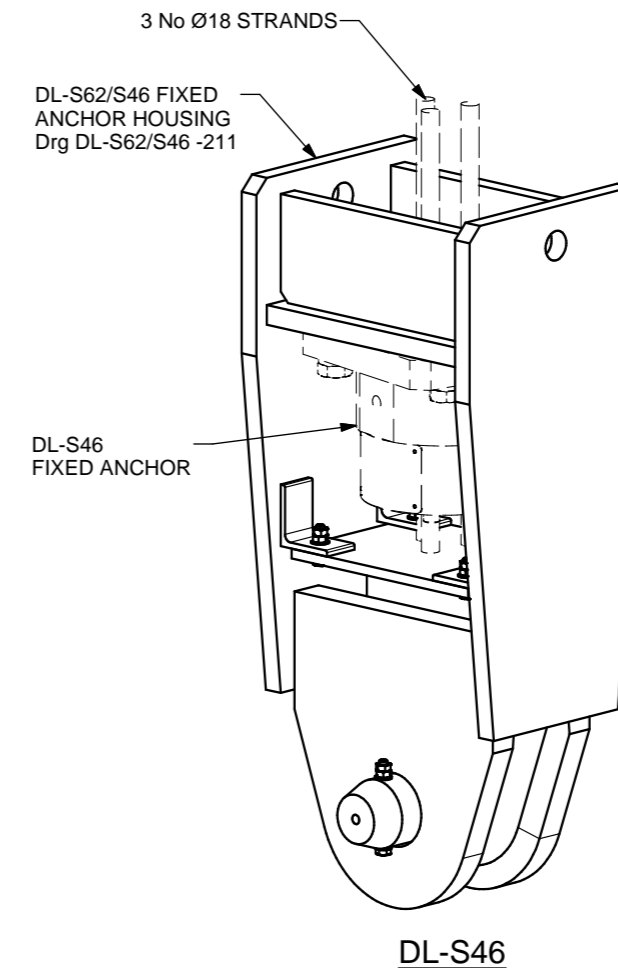
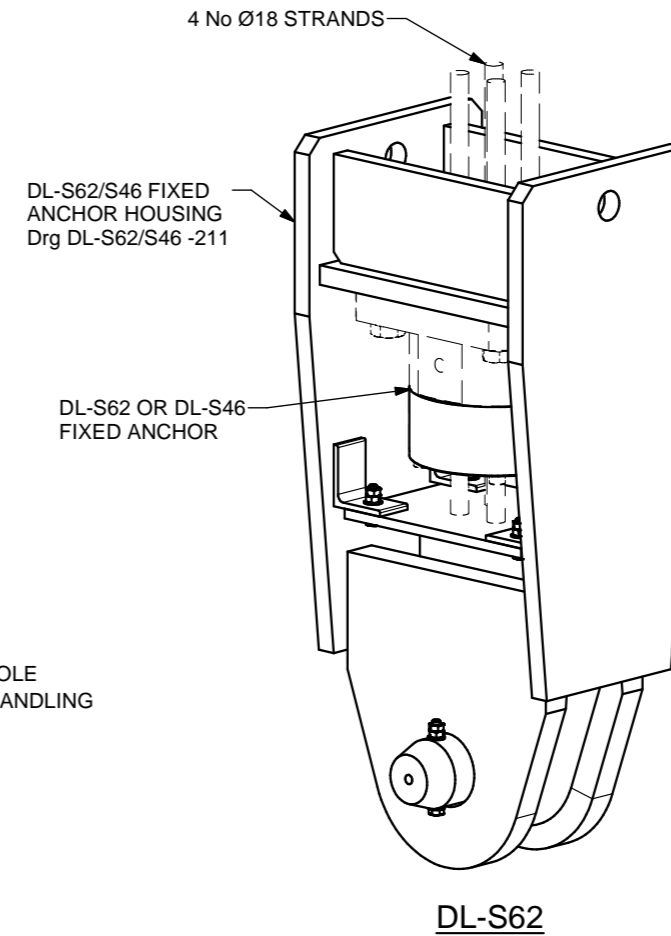
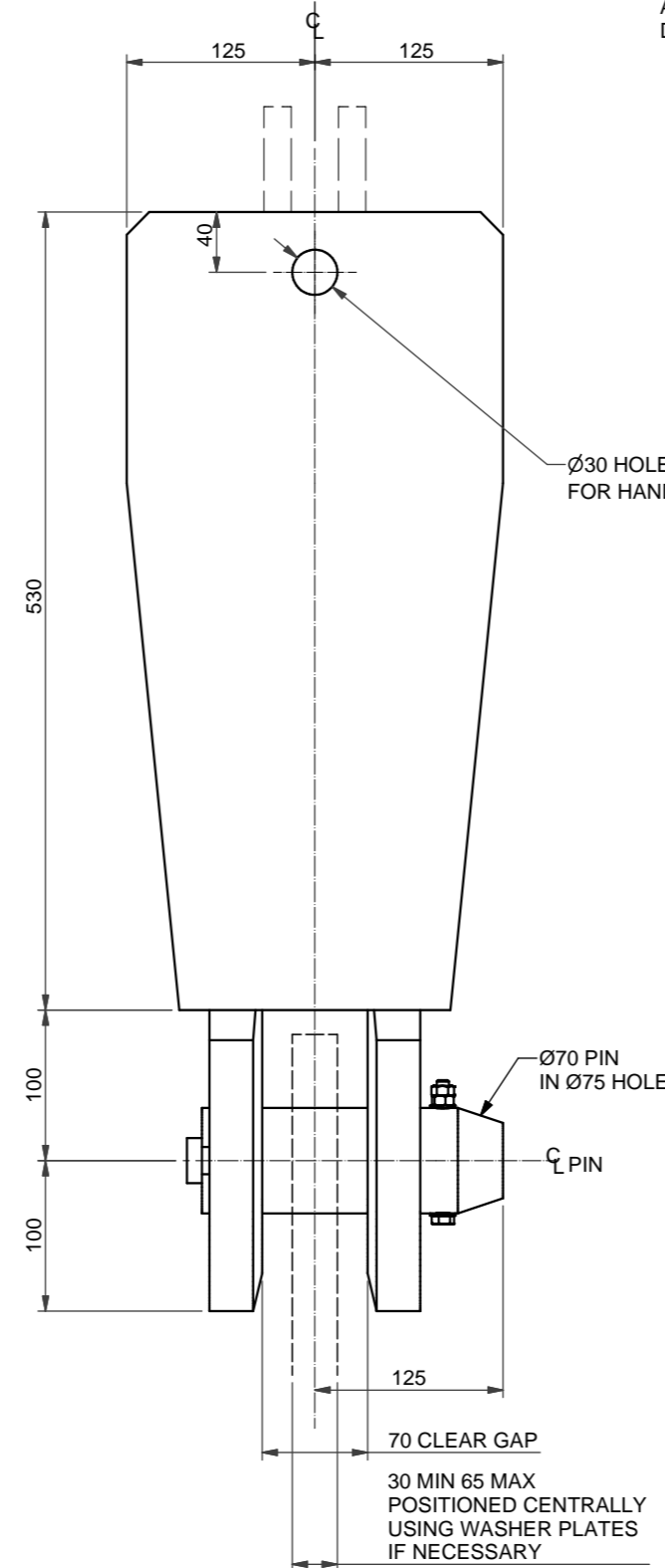
NOTES

SPECIFICATION

SAFE WORKING LOAD - DL-S62	62 Tonnes
- DL-S46	46 Tonnes
MIN OPERATING TEMPERATURE	-20 °C
No. OF 18 mm STRANDS - DL-S62	4 No
- DL-S46	3 No
STRAND CABLE O.D. - DL-S62	88 mm
- DL-S46	74 mm
FIXED ANCHOR WEIGHT	29 kg
FIXED ANCHOR HOUSING WEIGHT (INCLUDING PIN, EXCLUDING FIXED ANCHOR)	102 kg



DL-S62/S46 FIXED ANCHOR HOUSING (1 : 5)



N3	27.01.20	INF	TITLEBLOCK UPDATED	TJB	SAB
N2	14.12.18	INF	S46 VIEW ADDED	SG	SAB
N1	21.03.17	INF	ISSUED FOR INFORMATION	TJB	SAB
Rev	Date	Status	Description	By	Chkd

DLT Engineering
 International House
 Midland Road, Higham Ferrers
 Northamptonshire, NN10 8DN
 United Kingdom
 Tel: +44 (0) 1933 319133
 www.dlteng.com

Project
 DL-S62 STRAND JACK SYSTEM
 DL-S46 STRAND JACK SYSTEM

Drawing Title
 DL-S62/S46 FIXED ANCHOR HOUSING
 TYPE 1
 GENERAL ARRANGEMENT

Design Eng:	JK	Checking Eng:	SAB
Drawn by:	JK	Project Eng:	SAB

Scales (At A3) AS SHOWN
 Drawing Status
INFORMATION

Original Drawing size: A3	Drawing No.	Rev.
	DL-S62/S46-201	N3