

DO NOT SCALE

This drawing has been produced by DLT Engineering in accordance with the instructions of the client for their sole and specific use.

DLT Engineering shall not be liable for the use of any information contained on this drawing for any purpose other than that for which it was specifically prepared and provided.

Should there be any doubt regarding the interpretation of any information given on this drawing, enquiries should be directed to DLT Engineering at the address given below before executing such part of the works.

Copyright © DLT Engineering Ltd.

NOTES

SPECIFICATION

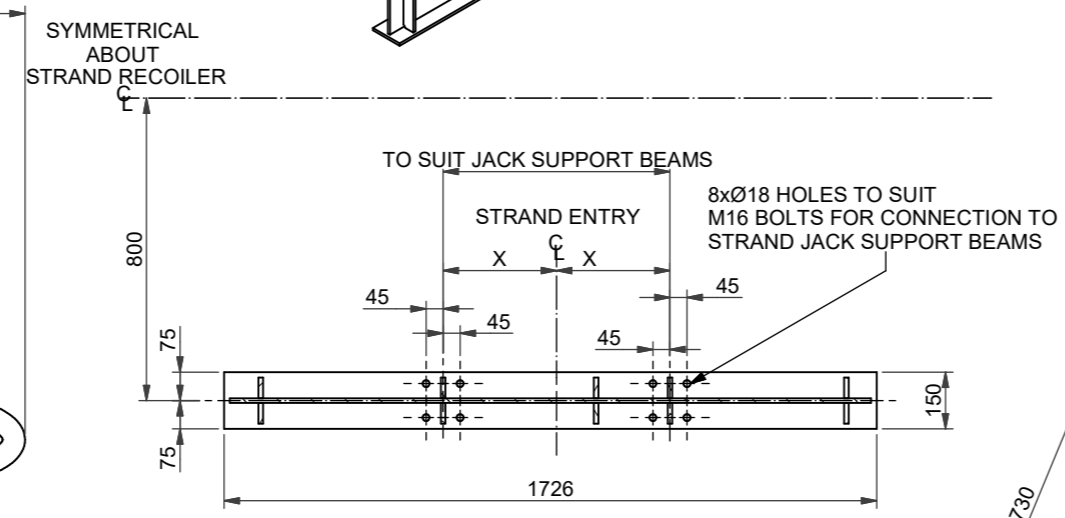
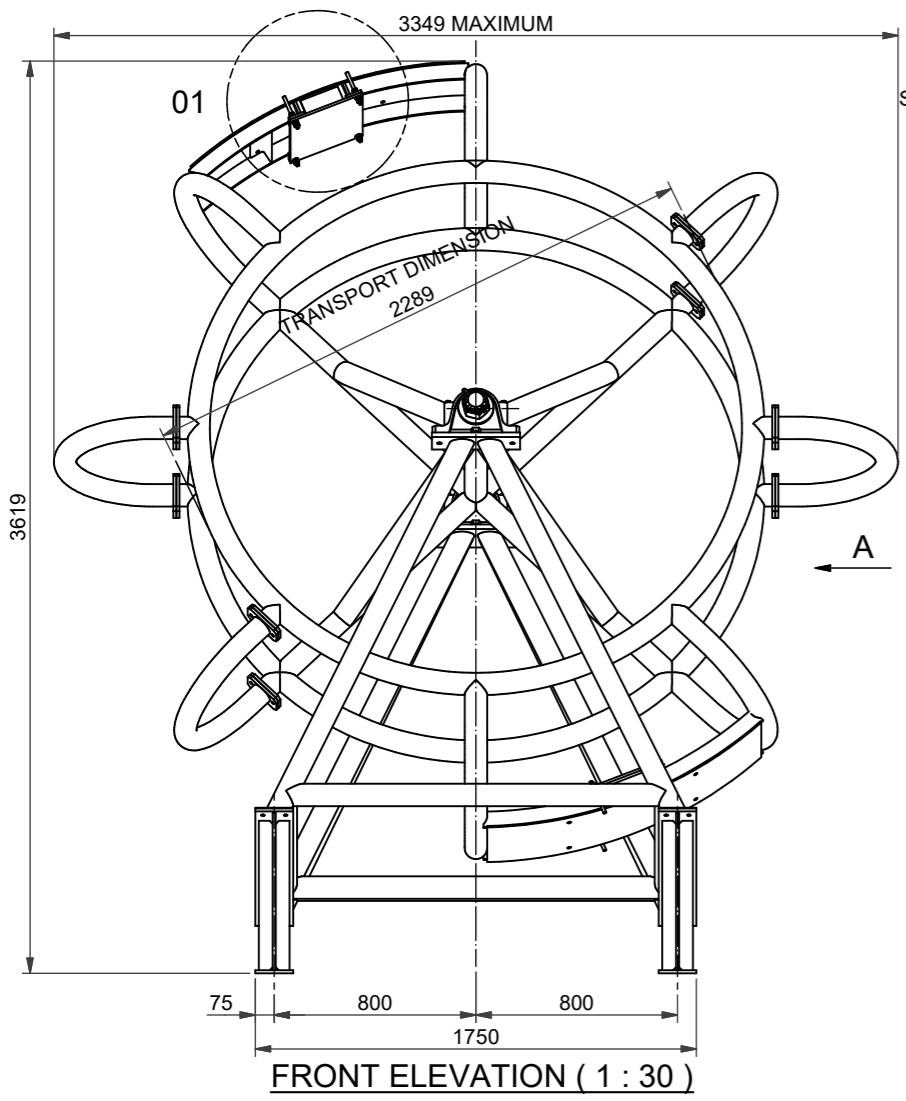
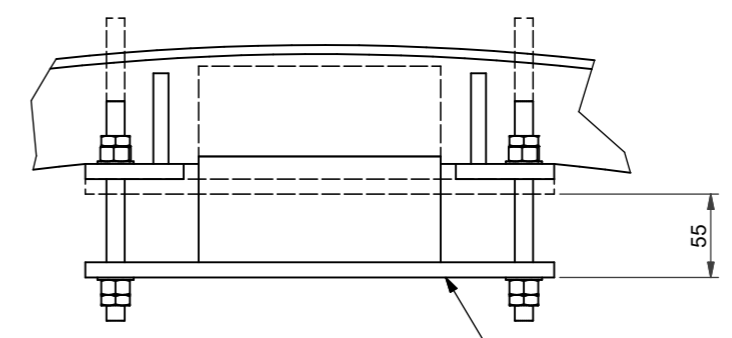
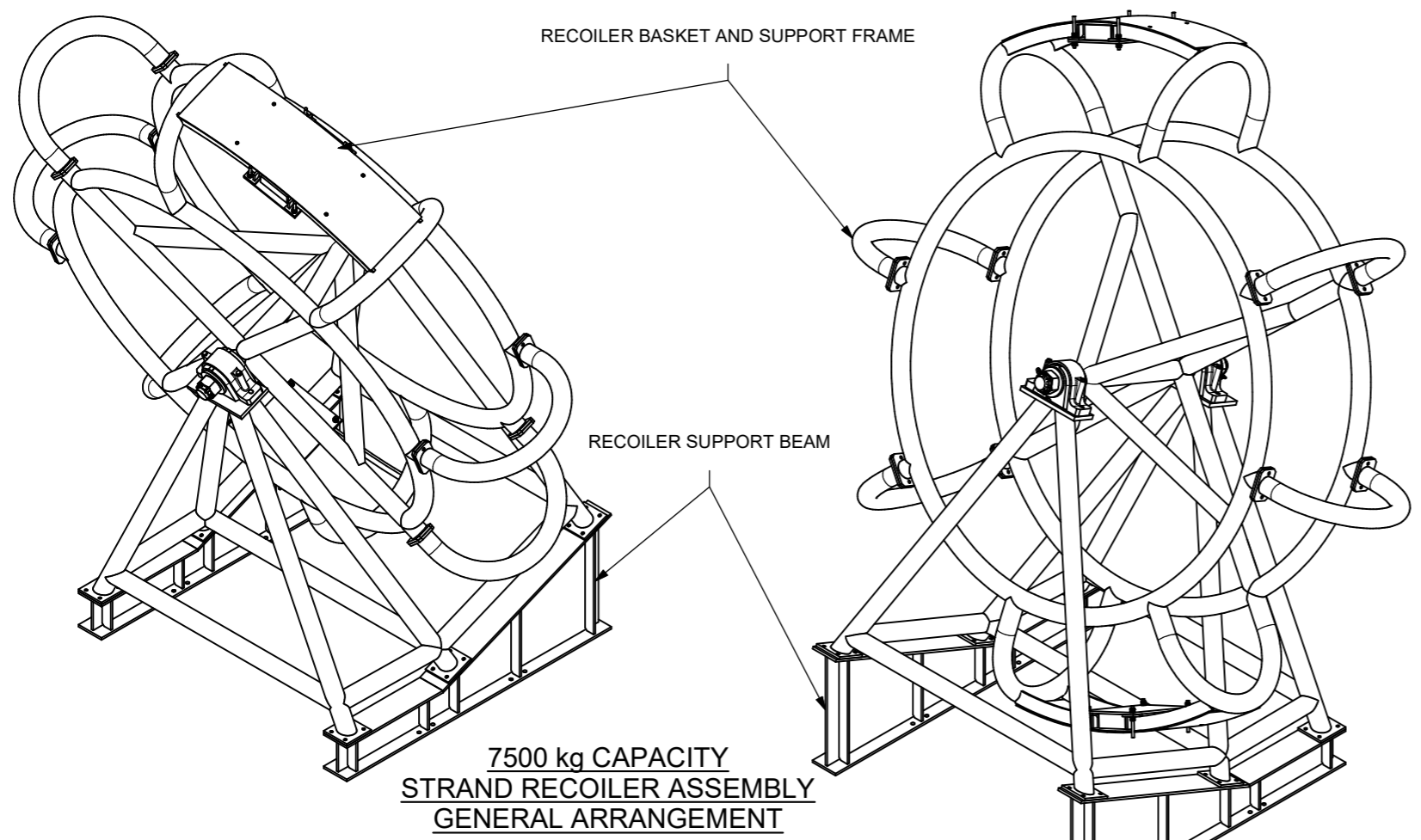
MAXIMUM STRAND CAPACITY = 7500kg.  
(EQUIVALENT TO 4280m OF Ø18 STRAND)

RECOMMENDED STRAND CAPACITY = 5000kg.  
(EQUIVALENT TO 2850m OF Ø18 STRAND)

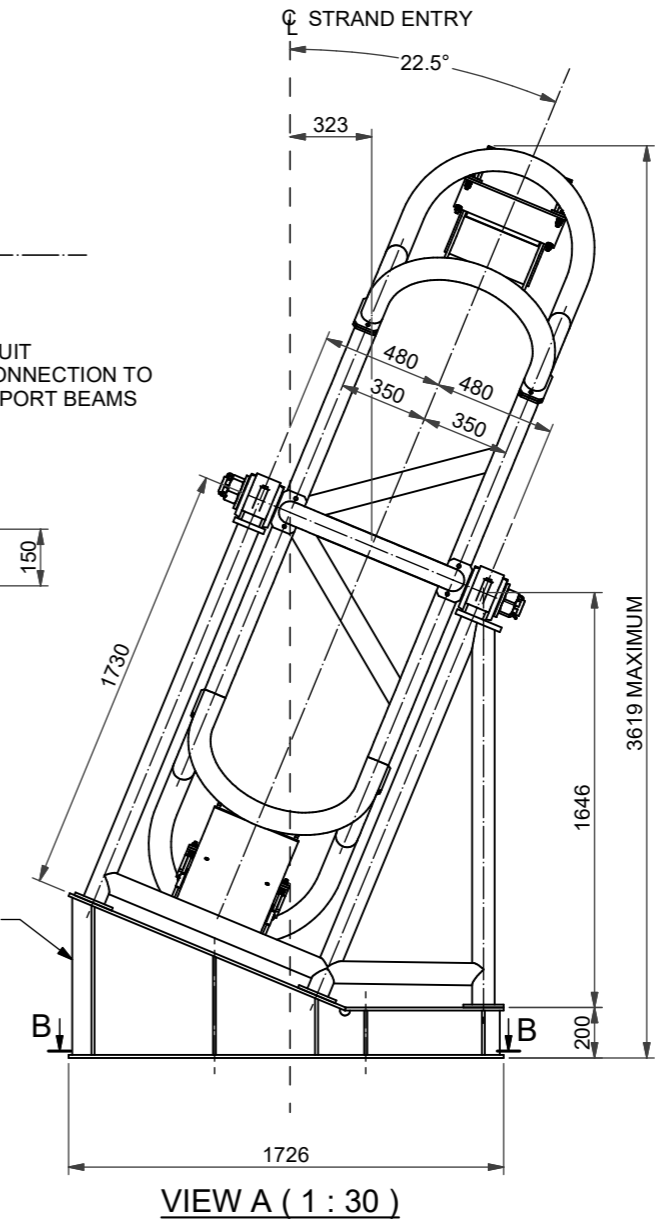
WEIGHTS:  
RECOILER SUPPORT BEAMS=117kg EACH  
RECOILER BASKET & SUPPORT FRAME=739kg  
TOTAL WITHOUT STRAND = 973kg  
TOTAL WITH STRAND = 8473 kg MAX

NOTE

STRAND RECOILER ASSEMBLY DISMANTLES INTO PIECES SUITABLE FOR TRANSPORT IN A STANDARD SHIPPING CONTAINER



JACK CARRIAGE	DIMENSION 'X'
DL-S418	250
DL-S588	300
DL-S697	315
DL-S836	350



**DLT** Engineering  
International House  
Midland Road, Higham Ferrers  
Northamptonshire, NN10 8DN  
United Kingdom  
Tel: +44 (0) 1933 319133  
www.dlteng.com

Project  
DL-SR7500  
STRAND RECOILER

Drawing Title  
7500 Kg CAPACITY STRAND RECOILER  
GENERAL ARRANGEMENT

Design Eng: JM Checking Eng: SAB  
Drawn by: SG Project Eng: SAB

Scales (At A3) AS SHOWN  
Drawing Status  
**INFORMATION**

Original Drawing size: A3  
Drawing No.  
**DL-SR7500-001**

Rev.  
**N2**