



SECONDARY CRUSHER SMP INSTALLATION PROJECT



ABOVE OR
BELOW
GROUND MCA
DELIVERS

PROJECT SCOPE

MCA was engaged in the SMP Construction of a Secondary Surface Crusher and Screening facility. Under this contract, MCA provided labour and equipment to partner with the client under a self-managed project model. This team consisted of a management team inclusive of Project Management through to tradespeople and trades assistants.



The contract works included the construction of:

Screen building

- o All aspects of the SMP
- o inclusive of install of the banana screen
- o storage bins
- o handling system
- o dust scrubber system
- o all hydraulics and services.

Crusher building

- o All aspects of the SMP
- o inclusive of the crusher
- o dust scrubber unit
- o services
- o all storage bins and chutes

Conveyor handling system

- o Installation of gantry modules
- o ground modules
- o all associated tie ins required and completed in planned outages.



Organisational structure

The project organisational structure and management roles and responsibilities for the project were defined and adhered to and contributed to the successful project planning and execution.

The successful and safe execution of the works within the specified timeframe of the New Surface Crusher Project required a high level of organisation and coordination. To this end, labour was organised in a relatively simple yet flat reporting structure and was coordinated by a central person.

To achieve this, the workforce was broken into two distinct groups; an execution team and a support team; and overseen by the Crusher works Superintendent. Additionally, an interface scheduler was appointed to the project to ensure that progress met the requirements for shutdowns and subsequent packages of work.

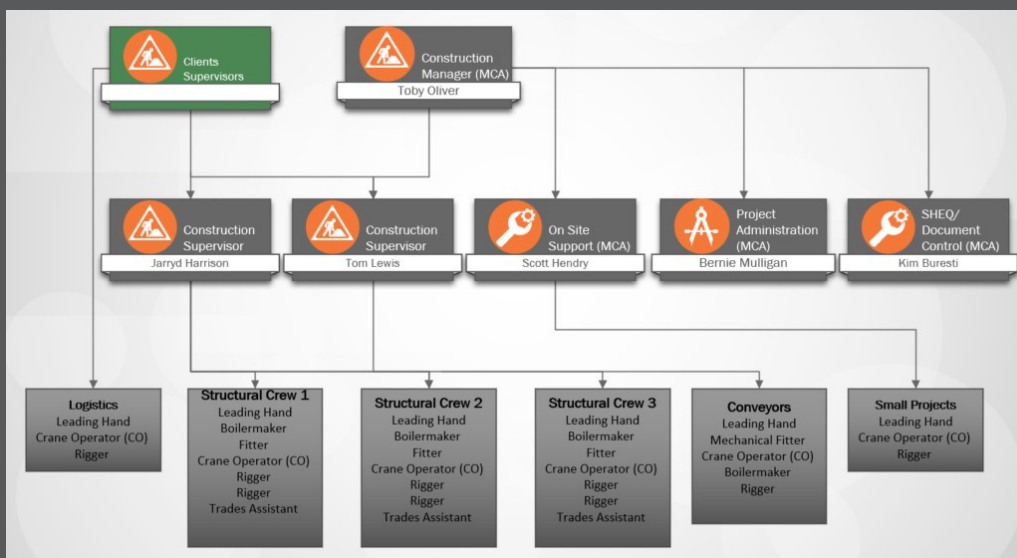
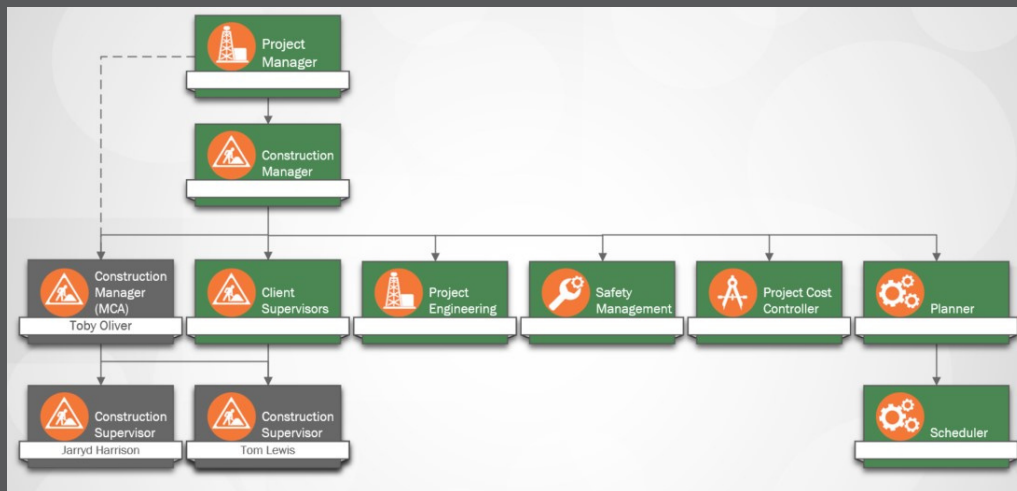
The Client Support Team was broadly responsible for HSE, Quality, Project Controls and Technical delivery of the project. The team was comprised of personnel of varying skill sets and was coordinated by the Superintendent to compliment the MCA Engineering Construction Team.

The MCA Construction Team was broadly responsible for completing physical works to the requirements directed by the Clients Support Team. This team was led by an MCA appointed Construction Manager, reporting directly to the Superintendent. The team was required to work in tandem with the NPM Support Team.

The project was very successful for both parties as an ongoing project relationship between the Client and MCA continues.



Organisational structure





Project Stats

MCA Man hrs- 57,613 including management
Zero (0) lost time injuries or Medical treated injuries
Structural steel installed - 1060 tonne



QMS Certification Services



QMS Certification Services



QMS Certification Services